



Termly Attendance Update

Term 5

w/c

18th May 2026



Welcome to the fifth attendance newsletter of the 2025/26 academic year. You 'said' we 'listened'. This newsletter has been streamlined and highlights key updates and priorities relating to school attendance. It should be read alongside our new supplementary attendance information document, which provides standing items and important reminders.

*Term 6's Attendance Update is due for release in **July 2026**.*

For further information and back copies, please refer to our webpages [Attendance and Education Welfare Service](#) and the [Bristol City Council Attendance Toolkit Attendance Toolkit - Home](#)

**MOMENTS
MATTER,
ATTENDANCE
COUNTS.**

Termly Top Tips



This section aims to provide a couple of suggested operational attendance activities aligned to the point in the academic year. Please note, these suggested activities aren't the only activities that we recommend delivering.

A 'targeted intervention' means that you should triage the cases and decide on the type of intervention that is most suitable. For example, a phone call, text message, email, letter, meeting or attendance plan etc... Try using the LEAP approach – listen, empathise, ask, problem solve.



Termly Top Tip 1: Strong partnership working is essential

Improving attendance and ensuring strong transitions requires coordinated action between schools and families, particularly at transition points. Schools and settings are encouraged to work together to provide enhanced transition offers to ensure strong starts for pupils.



Termly Top Tip 2: Clear attendance leadership and accountability

Schools must have a Senior Attendance Champion, robust attendance data monitoring, and a written attendance policy embedded in school culture (compliant with Working Together to Improve Attendance 2024) on your school's website.



Termly Top Tip 3: Every day matters

Even small amounts of absence significantly affect attainment, wellbeing and future outcomes. Missing 10 days a year can halve the chances of achieving expected standards or GCSE passes. Review your cohort of pupils who have +95% attendance and recognise the impact it's made to their school journey.

BCC Traded Attendance Services Cessation



- **What** - Bristol Attendance and Education Welfare Service – Traded Attendance Services Cessation Notification.
- **When** – At the end of this academic year we will stop our traded attendance services.
- **Why** – Over recent years, this has generated a very small amount of revenue which has been reinvested in our attendance team.
- **Benefits** - It means we can divert resource from trading to strengthen our free & universal core offer to all schools in the city.
- **Core attendance offer** – The core statutory attendance functions, including attendance targeted support meetings, elective home education, children missing education, and attendance legal work – all of which is delivered free at the point of delivery.
- To support a smooth and well-managed **transition** for schools and settings that currently purchase traded attendance services from BCC, we will be in direct contact with them in due course to confirm the next steps, arrangements, and key timescales.
- **T&Cs** - All traded work will continue in line with the original terms and conditions, and the Attendance and Education Welfare Service will maintain full delivery of traded attendance services through to the end of the current academic year.

For enquiries please contact education.welfare@bristol.gov.uk

Attendance and Education Welfare Service Core Offer



All remain universal services free at the point of delivery:

1. Attendance advice, communication, support and challenge
2. Attendance targeting support meetings (TSMs)
3. Attendance legal interventions
4. Children missing education (CME)
5. Elective home education (EHE)
6. Child employment, licensing and chaperones (CEAL)

For questions please contact education.welfare@bristol.gov.uk

Year 6 attendance and absence data is now available to secondary schools



Secondary schools can now access attendance and absence data for year 6 pupils offered a year 7 place at their school. They can find it in the Monitor your school attendance tool in [View Your Education Data \(VYED\)](#) under 'Year 6 transition data download'.

This data can help schools plan a positive transition for their pupils and see where early interventions might be needed to improve and maintain attendance.

We encourage secondary schools in your area to use the data and collaborate on transition planning.

How transition data can support secondary schools

National data shows pupils attend school less regularly once they transition from primary to secondary school. This makes transition a critical opportunity to intervene early and establish strong attendance habits before patterns of absence take hold.

Access to transition absence data ahead of September can help schools plan transition as a structured process, spanning the months before, during and after pupils join Year 7.

Secondary schools can use this data to:

- identify pupils who might need support – this includes pupils with high absence rates and pupils at risk of persistent or severe absence
- collaborate early to understand barriers to attendance – they can start working with feeder schools, local authorities and families ahead of transition
- plan targeted support – for example additional visits or early help for pupils at risk of poor attendance in September

For more guidance and a case study on using transition data to improve attendance, [watch our webinar on transition](#). You can also check [‘Key Area 7: Transition’ in our RISE attendance best practice toolkit](#) for schools.

You can also [register for a Monitor your school attendance webinar](#) on 29 April to learn more about how our attendance tools can support you. This webinar will focus on cohorts.

What the data includes

The data available to secondary schools is from the start of this academic year until the end of January 2026. Secondary schools will get updated data in June and September.

Monitor your school attendance pre-populated attendance codes



The DfE recently resolved an issue that was affecting attendance sessions that had been pre-populated by schools.

What we fixed

We recently identified a limitation that meant pre-populated attendance sessions were not appearing correctly in Monitor your school attendance dashboards. This may have impacted the accuracy of your local authority weekly downloads from 26 February to 27 April 2026.

This issue has now been resolved. On 24 April we made a change to correct schools pre-populated attendance codes in the Monitor your school attendance dashboard.

Tools that are not impacted

The following tools are not impacted by the change:

- Year 6 transition downloads
- Similar schools comparison reports (for schools, trusts and local authorities)

Reminder for schools in your local authority

The DfE would like to remind schools that they should not input future attendance session codes into their attendance registers and that the attendance register should be recorded during their morning and afternoon sessions.

If you need support

[Read this customer help centre article](#) to find out more.

You can also [raise an enquiry](#) through the DfE Customer Help Portal if you have further questions about your attendance data.

Bristol's Hampton by Hilton Asylum Hotel - Upcoming Closure and Pupil Support



Bristol's Hampton by Hilton Hotel asylum accommodation in Bristol is due to close on **29 May**. Remaining families will be moved on by the Home Office. While we have made requests for families to remain in Bristol where possible, the Home Office is unable to guarantee this.

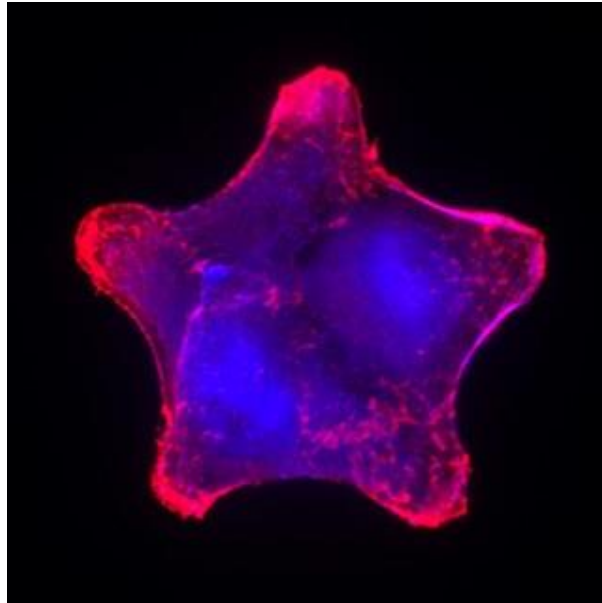
Due to data-sharing limitations, the Home Office and hotel providers cannot share full move-on details with the local authority. We therefore kindly ask schools to continue to track and maintain contact with affected families where possible, and to notify us if you

become aware of a family moving. Please continue to make CME and PT referrals to the Education Welfare Service where needed.

If any families require support with home-to-school transport following a move, please do get in touch with the Attendance and Belonging team so we can explore available support.

Thank you for your continued support during this period of disruption for families and pupils.

Health Protection Summer Term Update - Education



Dear Education Colleagues,

This update is intended to provide education settings with the latest updates in regard to Health Protection. Please feel free to use information in this email in your own communications as appropriate. We intend on sending these short updates at the beginning of each Autumn, Spring and Summer term.

Reminder of UK Health Security Agency (UKHSA) Contact Details and Useful Links

Should you need any advice or guidance regarding an infectious disease concern within your education setting, you can contact the UKHSA South West Health Protection Team via the following:

Phone: 0300 303 8162

Email: swhpt@ukhsa.gov.uk

Links which may be of use:

[Managing specific infectious diseases: A to Z - GOV.UK](#)

[Is my child too ill for school? - NHS](#)

This poster can be displayed in education settings: [Should I keep my child off school checklist poster](#)

Immunisation Update

A reminder that Sirona Care and Health is the School-aged Immunisations Provider for Bristol. The service is offered primarily in schools and community catch-up clinics are available for anyone who has missed their vaccination in school or who does not attend school. For more information:

[School Age Immunisation – Children and Young People’s Services](#)

[Vaccination - BNSSG Healthier Together](#)

Measles Information pack for early years, education and childcare settings has been updated and is attached to this email. The pack is for managers and staff working in early years, education and childcare settings in England. It provides information on measles and key actions you can take to reduce the spread of measles infection in your setting. This version should now replace any other measles packs in use for these settings.

Farm visits and ticks

While farm visits are enjoyable and educational, they carry a risk of infection from animals or the environment. [How to have a fun and healthy farm visit with the family – UK Health Security Agency](#) sets out clear, practical advice for example on handwashing, and food hygiene, as well as what to do if symptoms develop after a visit.

The UKHSA farm visits toolkit has been updated and there are social assets there to be used in your setting if appropriate [Farm visits - Google Drive](#)

UKHSA encourages everyone to ‘be **tick aware**’.

A tick is a tiny spider-like creature that lives on animals such as sheep or deer. The main tick feeding season is late spring, early summer and autumn, when they can bite if you are walking through a tick infested area. Ticks can also be carried home by pets and dogs. Some ticks can pass on the bacteria that causes Lyme disease.

If you have been bitten by a tick please visit [NHS.UK](#) or the [UKHSA Lyme disease page](#) for more information.

Tick resources can be found here [Tick awareness and toolkit - GOV.UK](#)

Travellers reminded to protect themselves against mosquito bites

UKHSA is reminding those travelling over the summer months to prepare before you travel, and take precautions against mosquito bites. Simple steps such as using a DEET based insect repellent, covering-up skin and sleeping under insecticide-treated bed nets can greatly

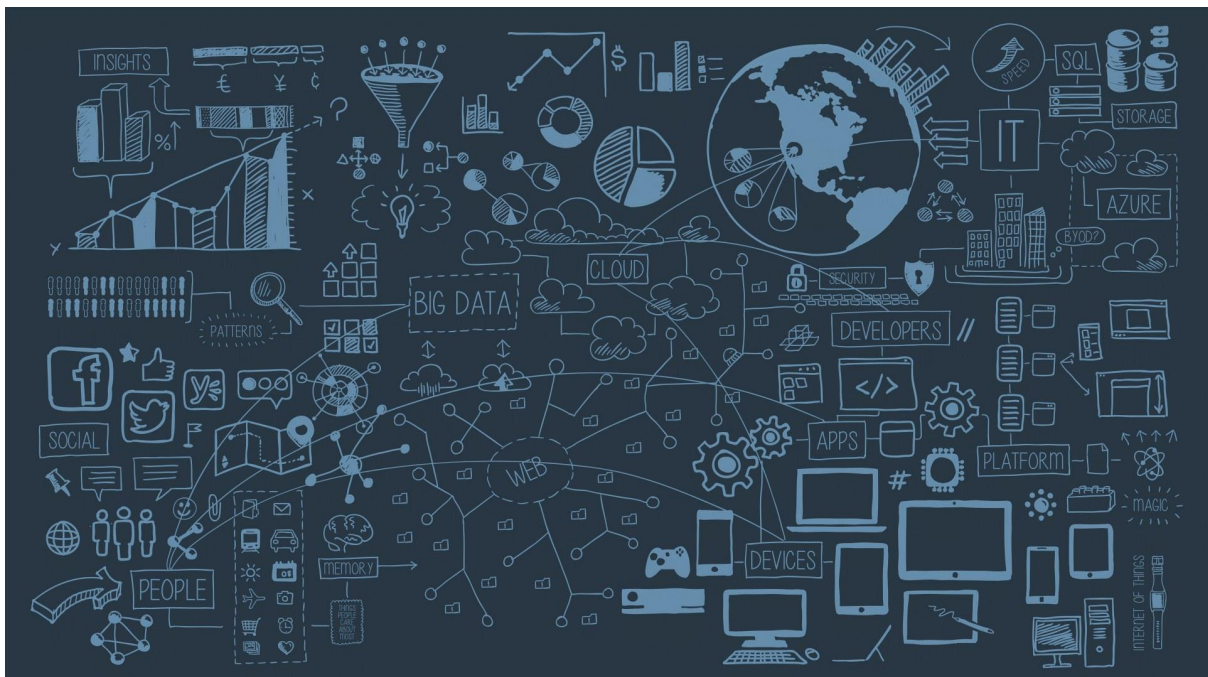
reduce the risk. Before travelling, we are encouraging the public to check the [Travel Health Pro](#) website for the latest advice.

More information from UKHSA can be found here [Travellers reminded to protect themselves against mosquito bites - GOV.UK](#). So if you are planning on any interesting and exotic summer holidays this year, travellers are strongly advised to visit the [Travel Health Pro](#) website, supported by UKHSA, and check the country information page for specific recommendations for their destination.

[New UKHSA data](#) shows dengue cases have fallen significantly, but chikungunya infections rose 43% in 2025 and malaria continues to be reported at consistently high levels among returning travellers.

The UK Health Security Agency (UKHSA) is reminding people to take precautions against mosquito-borne infections when travelling. While the latest data brings positive news on dengue, with cases falling significantly in 2025, travel-associated chikungunya cases in England are at their highest point in more than a decade and malaria case numbers in returning travellers remained at a high level.

Local Attendance Data



Please note that this data comes directly into the local authority from school MIS and includes schools who share their attendance data with the local authority.

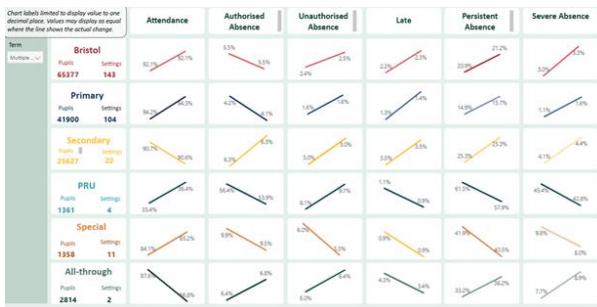
Additionally, chart labels in the images below are limited to display value to one decimal place. Values may display as equal where the line shows the actual change.



1 - Term 1 25/26 (up to 3rd Oct 2025) - academic year to date set against term 1 last academic year.



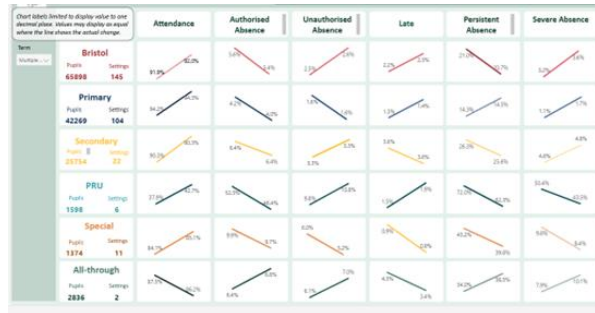
2 - Term 2 25/26 (up to 5th Dec 2025) - academic year to date set against term 1 & 2 last academic year.



3 - Term 3 (up to 6th February 2026) - academic year to date set against terms 1 to 3 last academic year.



4 - Term 4 (up to 19th March 2026) - academic year to date set against terms 1 to 4 last academic year.



5 - Term 5 (up to 15th May 2026) - academic year to date set against terms 1 to 5 last academic year.

Other sources of attendance data for schools include:

1. Your schools own Management of Information system attendance data reports
2. The DfE View your school's own attendance data (which includes national and regional comparators & absence bandings for your setting)

<https://www.gov.uk/government/publications/monitor-your-school-attendance-user-guide>

Contact: If you require for further information in relation to this Attendance Update, please contact Vanessa Davies (Service Manager: Attendance and Education Welfare Service) on vanessa.davies@bristol.gov.uk

Alternatively, for general attendance related questions, please contact the EWS Helpline on 0117 3521438 or email education.welfare@bristol.gov.uk and a Duty Education Welfare Officer will be available to assist you.

